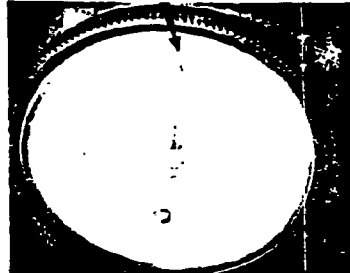


B. (CON'T)

4. Place the copper crusher onto the dial indicator platform and set the stylus down to the center of the crusher. Now adjust the dial on the face plate until it reads "0". (Fig.#3)

Fig. No. 3

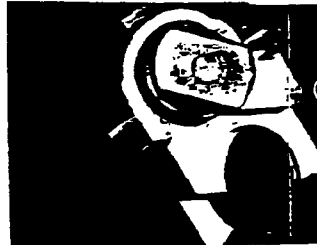


5. Now that the indicator has been calibrated to the crusher, remove the crusher and place it into the crusher holder. (deburred end goes first) (Fig.#4) Now insert the assembly into the chamber. Be sure that the radius of the holder faces the ejector. (Fig.#5) This assures you that the ejector will not eject the holder when the gun is opened.

Fig. No. 4



Fig. No. 5



6. Slowly close the gun. DON'T SLAM IT CLOSED. Be sure that the gun is fully locked up. Full Lock Up-- the operating lever should be in the center position-- (Fig.#6)

Fig. No. 6



VPD SHEET PROTECTOR 4-60

VPD SHEET PROTECTOR 4-60