

File Number:	22152	Arms Service number:	108184
Last Name:	ZEDACK	First Name:	MICHAEL
Street:	307 WINSOM COURT	City:	WOODSTOCK
State:	GA	Zip:	30188
Home Ph:	770-367-7983	Work Ph:	
Product Type:	F	F A T O	
Type Concern:	S	PI PD P S	Concern Code:
Concern:	FIRED ON SAFE RELEASE		
Cause Code:	4006	Cause:	ALTERED ADJUSTMENTS OR COMPONENTS
Assigned To:	SUPRY	Classification:	UND UNJ UNC UND J
Settlement Detail:	BLM PROGRAM	Settlement Amount:	\$0.00
Date Opened Rem:	2/20/2006	Date Opened by P/S:	2/20/2006
Date of Incident:		Date Closed:	2/20/2006
Date to Analysis:		Bullet Weight:	
Date from Analysis:		Manufacturer:	REM
Model:	722	Serial:	274548
Date Code:	RYY	Date Mfgd:	11/1/1952
RAMAC:	722	Litigation:	<input type="checkbox"/>
Custody:		PreLitigation:	<input type="checkbox"/>
Obsolete:	<input checked="" type="checkbox"/>	Comments:	Trigger assembly set screws altered. Replace TPA, clean action and check over completely under the Bolt Lock Modification Program for \$20.00.
Time of Modification:	7:34:04 AM	Date of Modification:	2/22/2006

[PS 7242]



1.5#

General Repair Form

Back to Repair Services

11/52

NOTE: Please print and complete this form, and then include it with your firearm

Model Number: 722	Serial Number: 274548
Name: Michael Zedack	Date of Purchase: 2/4/06
Address (no PO Boxes):	
307 Winsom Court	
City: Woodstock	State: GA Zip: 30188
Phone (Daytime): (770)-367-7983	Fax: 770-410-9158
E-mail Address: MJZ442@BellSouth.net	
Please describe your problem:	
<p>Problem with gun "firing" when safety is moved from "ON" to "off" position. Also gun will sometimes "fire" when Bolt is moved & safety is "off". I have found this to happen more with safety ON & when apply pressure to trigger. When you then move safety to "off" -- it fires.</p>	
Additional Information: (Ammo type, brand, handload specifications, etc.)	
<p>Could you also check BARREL & give me your opinion on condition of wear.</p>	
<p>NOTE: Prior to shipping your firearm, contact the Repair Center for services provided and estimated repair time.</p>	
<p>Ⓢ WARNING: DO NOT SEND LIVE OR SPENT SHELLS IN YOUR FIREARM OR IN THE SAME BOX WITH THE FIREARM. THIS IS A VIOLATION OF FEDERAL LAW. IF YOU FEEL YOU MUST SEND SPENT SHELLS PLEASE SEND THEM IN A SEPARATE PACKAGE AND INCLUDE NAME, ADDRESS (WITH ZIP CODE), TELEPHONE AND MODEL AND SERIAL NUMBER OF YOUR FIREARM.</p>	
<p>:: Record the serial number of your firearm before sending it. :: Pack your firearm for safety and to prevent further damage in shipping and handling. Preferably, ship in a firearm box. (Note: Original boxes may not be returned.) :: Remove all accessories from your firearm to prevent loss or damage. :: Ship your INSURED firearm by either UPS or Parcel Post. Remington is not responsible for damage or loss during shipment, so you may elect to purchase insurance from your carrier.</p>	

Number: 274548

Model: 722



RE00108184

Legal Notices

78184

TRIG-ASSM. SET SCREWS
 ALTERED. REPLACE TPA, check
 over, clean BOLT
 LOCK PROGRAM FOR B2000

al_repair_form.asp

2/6/2006

Qcable

PS 7243



Request a Catalog | Partners | Retail

HOME

SAFETY

SPORTSMEN'S LIBRARY

WHAT'S NEW

PRODUCTS

COUNTRY STORE

Home > Safety > Safety Center > Safety Modification Program > Models 721 & 722

Safety

Safety Center

10 Commandments

Online Courses

MSDS

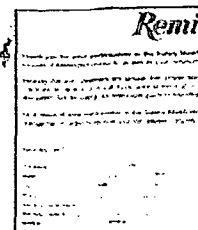
Education

Safety Modification Program

Remington Model 721 & 722

If you own a Remington Model 721 or 722 rifle:

All Remington Model 721 and 722 rifles were manufactured with a bolt-lock mechanism. These models were discontinued in 1961. If you participate in the Safety Modification Program, your firearm will be cleaned and inspected for proper functioning, by a qualified gunsmith. Once the condition of your firearm has been assessed, you will be notified of one of the following:



Download The

Your rifle's trigger assembly is either in good operating condition and the gunsmith will proceed to physically remove the bolt-lock feature so that your rifle can be loaded and unloaded while the safety remains in the "S" or "On Safe" position; or

- Your rifle's trigger assembly is found to be in an unsatisfactory or potentially unsafe operating condition because of any number of factors, including wear, alteration or maintenance. The entire trigger assembly will be replaced with a new factory trigger assembly, which does not incorporate a bolt-lock mechanism.

In either case, the total cost to you is \$20, shipping and handling. You will also receive redemption certificate to complete and submit in order to receive a free blaze orange h certificate).

How to participate in the Safety Modification Program

1. Complete the General Repair Form and
2. Send or deliver your firearm and the completed repair form to either:
 - a) A Remington Authorized Repair Center; or
 - b) Ship your firearm to the Remington factory at:

Remington Arms Company, Inc.
 Ilion Firearms Plant
 Attention: BL Safety Program
 14 Hoefler Avenue
 Ilion, NY 13357

Remington will bill or arrange for payment once your firearm is received and evaluated.

CAUTION: It is your responsibility to comply with all laws and regulations regarding tr

http://www.remington.com/safety/safety_center/safety_modification_program/models_721... 1/30/2006

PS 7244

Date: 2/20/06By: B. TMAVISFIREARM INSPECTION WORKSHEETBACKGROUNDCustomer name: Michael ZedackR.E. Number: 108184Reason for inspection: FSRFIREARMManufacturer: Rem. Model: 722Serial Number: 274548 Date of Manufacture: 11/52Overall external condition: FAIRBarrel condition: OKAYReceiver condition: OKAYStock condition: OKAYBolt/firing pin condition: OKAY

Trigger assembly condition:

Engagement: ALTEREDAdjustments/alterations: ALTEREDOther: —Headspace: —

Function evaluation:

(PS 7245)

Feeding: _____

Extraction/ejection: _____

Trigger pull: 1.5th

Manual safety: OKAY

Test firing results (if applicable): —

DISPOSITION

TRUP ASSM SET SCREWS ALTERED, REPLACE TPA, CHECK OVER,
clean underboft lock program for \$20.00 quote

ADDITIONAL COMMENTS

This image shows a single page of white paper with horizontal blue or grey ruling lines. The lines are evenly spaced and run across the width of the page. There is no handwriting or printed text on the page.