

Addenda: CHECKING A DEALER SAMPLE



Bolt sleeve was dinged on this fresh sample taken from dealer stock. This is not a major fault, but certainly is not acceptable.

Having completed the test report printed here on the Remington Model 700 in 350 Remington Magnum, I got a chance to see an early 1969 Model 700 as delivered to dealers. I examined this rifle as carefully as I did the editorial sample furnished, since this straight-out-of-the-box rifle was what the gun buyer—and Gun-facts reader—would get from his dealer.

Speaking frankly, we were led down the gurdan path a bit, as the English say. There was nothing spectacular about the Model 700 this dealer had. Quite the contrary: It had a lot to unrecommend.

This was a particularly hard-hitting demonstration that editorial samples are just that, and evaluating them for general workmanship has little value for the reader. It is nice to know that the factory has good workmen on hand for special projects, and that the factory thinks highly enough of gun writers to want to

give them first-class guns to play with, but it would be even nicer to know that the guns said writers evaluated were truly representative of what the public gets.

- Not only was the finish marred around the swivel studs, but the wood fibers were crushed and broken.
- The checkering was passable, but not carefully in place.
- The swivel studs were out of line.
- The combination of misplaced checkering and out-of-line studs was particularly undestorable.
- The stock finish was unevenly applied, and so thin in some places that what rubbing-out had been applied cut through in two places.
- The finish showed much shrinkage, so any serious rubbing would have cut through anyway.

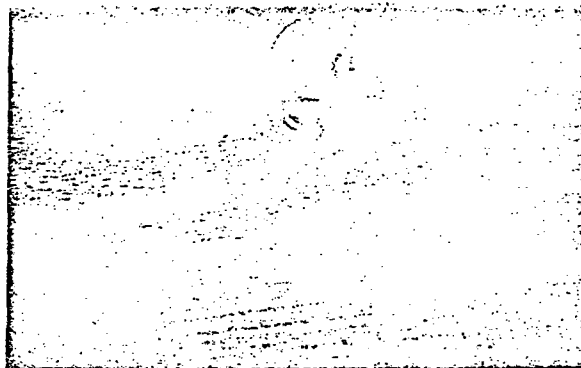
- There was much orange peel, and little effort spent rubbing it out.
- There was a check in the right hand side of the stock an inch or so up from the buttplate. It had gotten a little filler and a pass or two with the finish, but that's all. What looked like a crack was quite apparent.
- The stock finish had many ripples in it.
- The metalwork was about as good as the editorial sample, except that the front ramp was poorly finished, so much so that white metal could be seen from across the room, and the blued bolt sleeve had a gouge in it, with no effort even to touch it up with cold blue made.

Of course, this rifle could be refinished to match the editorial sample, and likely enough it will shoot as well, although such a great difference in woodwork might make one suspicious about other differences. Still, I am disappointed.

C.S.L.



Flaws visible here include skimmed finish and unrubbed orange peel, neither of which makes sense in new rifle.



Running in swivel studs on dealer-destined rifle was quite casually handled. Wood fibers are crushed.