



## INSTRUCTIONS FOR ORDERING PARTS

### (PLEASE READ CAREFULLY)

Please give model number, part number and name. Give serial number and state caliber or gauge and choke. Identify parts from list, picture or exploded view. List interchangeable shotgun barrels on separate order form to speed shipment.

Cover only one subject in letter or order. Do not order parts and give repair instructions in same letter.

Please do not ship sample parts if they may be identified otherwise. See shipping instructions below.

The sale of center fire rifle barrels, bolts and receivers is restricted. Special tools and gauges are required for assembly.

Parts will be supplied for discontinued models if available. Parts cannot be supplied nor guns repaired if not listed in complete line parts list. **IMPORTANT:** Do not combine Part Orders with Gun Service Orders. Please send Part Orders direct to:

**REMINGTON ARMS COMPANY, INC.**  
PARTS DEPT.  
ARMS SERVICE DIVISION  
Ilion, New York 13357

## INSTRUCTIONS FOR FACTORY SERVICE

### (PLEASE READ CAREFULLY)

Please package carefully. Use plenty of cushioning material to prevent movement of gun or parts in package. Please do not ship gun in a gun case, or special container that must be returned. Return of gun or parts will be expedited if properly packaged in a throw-away carton. Clearly mark forwarding and return address on gun package as well as on attached letter.

Securely attach complete letter of information on outside of each package returned to factory for repairs. Please do not return gun accessories such as sling straps, quick release swivels, special boots, covers, telescopes, mounts or any special equipment to factory with gun shipment. Give full details of contents. State if complete gun or part. List model number, part number and name, serial number and caliber or gauge. Give full condition of contents — any parts missing or damaged, etc. This will enable us to accurately list needed repairs.

Do not order parts and give repair instructions in same letter. To avoid delay in starting work, please include in first order or letter the trouble to be corrected, changes desired or parts to be replaced. If an estimate is required please advise. Otherwise work will proceed and a statement of cost will be sent. This will speed service.

Unless specified otherwise, shipments will be made by way of Parcel Post on small packages, Express on larger packages. Remington gun parts are not interchangeable with those of any other make. For this reason the Remington Arms Company, Inc., cannot service any gun not of its manufacture.

Repairs will be made on discontinued models as long as supply of parts is available. However, repairs cannot be made for models which are not listed in Complete Line Parts Lists.

**IMPORTANT: IT IS A FEDERAL OFFENSE TO SHIP FIREARMS AND AMMUNITION TOGETHER. BEFORE PACKAGING FIREARMS FOR RETURN TO FACTORY, ALL LIVE AMMUNITION SHOULD BE REMOVED.**

If live ammunition is included in package, shipment cannot be made by Insured Mail. All other shipments may be made by Insured Mail. Please send repairs direct to:

**REMINGTON ARMS COMPANY, INC.**  
ARMS SERVICE DIVISION  
Ilion, New York 13357

For instructions on how to dress, ship and deliciously cook wild game, send for the Remington "Wild Game" Cookbook \$3.95—Remington Sportsmen's Library, P.O. Box 432, Bridgeport, Connecticut 06601.

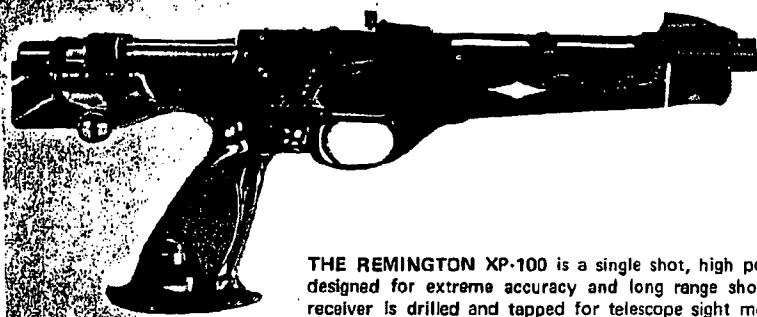
Printed in U.S.A.

Form RD 5469  
Rev. 679

# Remington

# MODEL XP-100 BOLT ACTION PISTOL

221 REM.



THE REMINGTON XP-100 is a single shot, high power pistol designed for extreme accuracy and long range shooting. The receiver is drilled and tapped for telescope sight mounts. The receiver is fitted with removable plug screws that may be removed for mounting receiver sights or telescope mounts. Trigger adjustment is factory sealed to provide correct weight of trigger pull.

**FIRE** — Rotate safety fully forward. Trigger can be pulled to fire pistol and bolt handle raised to open action.

**TO LOAD** — Before loading pistol make sure barrel is clear, free of heavy oil, grease or any obstruction. Open action. Place safety ON SAFE. Load cartridge upon loading incline in receiver, close bolt and lower bolt handle to lock action.

**TO UNLOAD** — Raise bolt handle and carefully open action to extract cartridge from barrel chamber. Cartridge can then be easily removed.

**SIGHT ADJUSTMENT** — The XP-100 has a front sight of the fixed blade type that is not adjustable. The rear sight may be adjusted for both windage and elevation (Fig. 2). A small wrench is supplied with the pistol for this purpose.

**WINDAGE** — Loosen windage screw and move rear sight leaf to left or right to desired position. Tighten screw. Moving leaf to right will move bullet impact on target to right. Moving to left will move bullet impact to left.

**ELEVATION** — Loosen elevation screw, raise or lower rear sight eyepiece to desired position and tighten screw. Raising eyepiece will increase range or raise bullet impact on target. Lowering eyepiece will decrease range or lower bullet impact on target.

**CLEANING AND CARE** — Caution: Before cleaning make sure there is no cartridge in the barrel chamber. Cleaning of barrel or bolt is more easily done with bolt removed. To remove bolt, press down on front of bolt release with a small, flat key or screwdriver. Bolt release is located in left rear of bolt channel in receiver. (Fig. 3) Withdraw bolt from receiver. When cleaning barrel use lightly oiled, soft cloth. Clean from breach to muzzle. Scrub barrel bore and cartridge chamber with a good solvent. Wipe dry and re-oil bore and chamber very lightly. Clean bolt or bolt parts with a good petroleum solvent. Brush bolt face to remove shooting residue. Re-oil lightly and lubricate cam surfaces on bolt to prevent wear. If necessary to clean firing pin assembly, pull firing pin head back until coin or similar piece can be inserted in slot near back edge of firing pin head (Fig. 4). Hold bolt handle and turn bolt plug until firing pin assembly can be removed from bolt. Clean, re-oil lightly and reassemble in reverse. Removal of stock is not recommended unless for replacement of fore-end weights. See exploded view.



Fig. 1

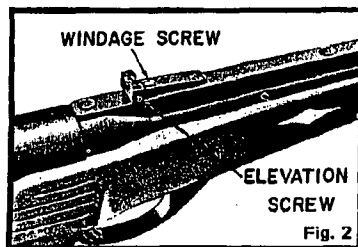


Fig. 2

To replace bolt into receiver push safety forward, align bolt lugs to receiver and push bolt forward.

After handling, wipe all steel parts. Moist fingerprints can cause rusting unless removed. After using in wet weather always wipe steel parts with oil. Abrupt temperature changes can cause condensation and wetness; therefore, special care is needed - especially to inside metal parts. For best results when shooting in freezing weather, remove excess oil. Use dry graphite if necessary to lubricate metal parts.



Fig. 3

**FORE-END WEIGHTS** (Fig. 5) — Five (5) cavities are provided inside fore-end (under barrel) for adding weights. Each cavity will hold a .38 caliber, metal case, 130 grain bullet (nose down). Barrel and action must be removed from stock to add weights. To Remove Barrel and Action: Remove bolt. Unscrew and disassemble forward and rear receiver screws. See exploded view. Lift barrel and action from stock. Insert weights and reassemble barrel and action to stock. Make certain nylon receiver screw washers (forward and rear) are in correct position against receiver during reassembly. Also that trigger balance remains centrally positioned on its pin in stock. This will enable top of balance to re-enter slot in trigger link easily. Make certain both receiver screws properly re-enter metal screw escutcheons in stock and tighten action securely.

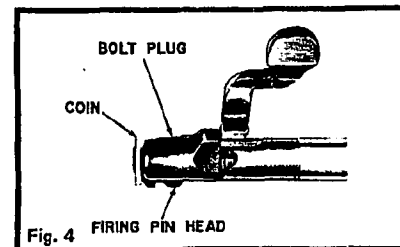


Fig. 4

**MAINTENANCE** — Gun should be checked periodically by a competent gunsmith to ensure proper inspection and any necessary replacement of worn or damaged parts.

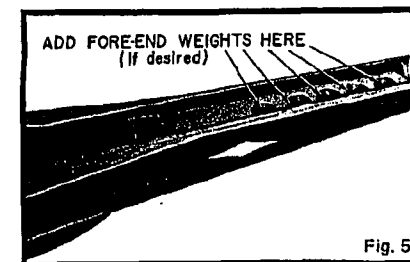
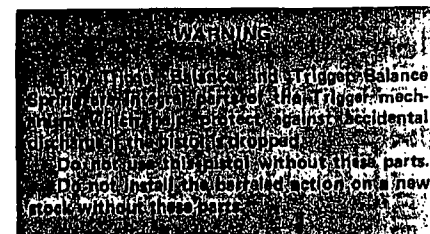
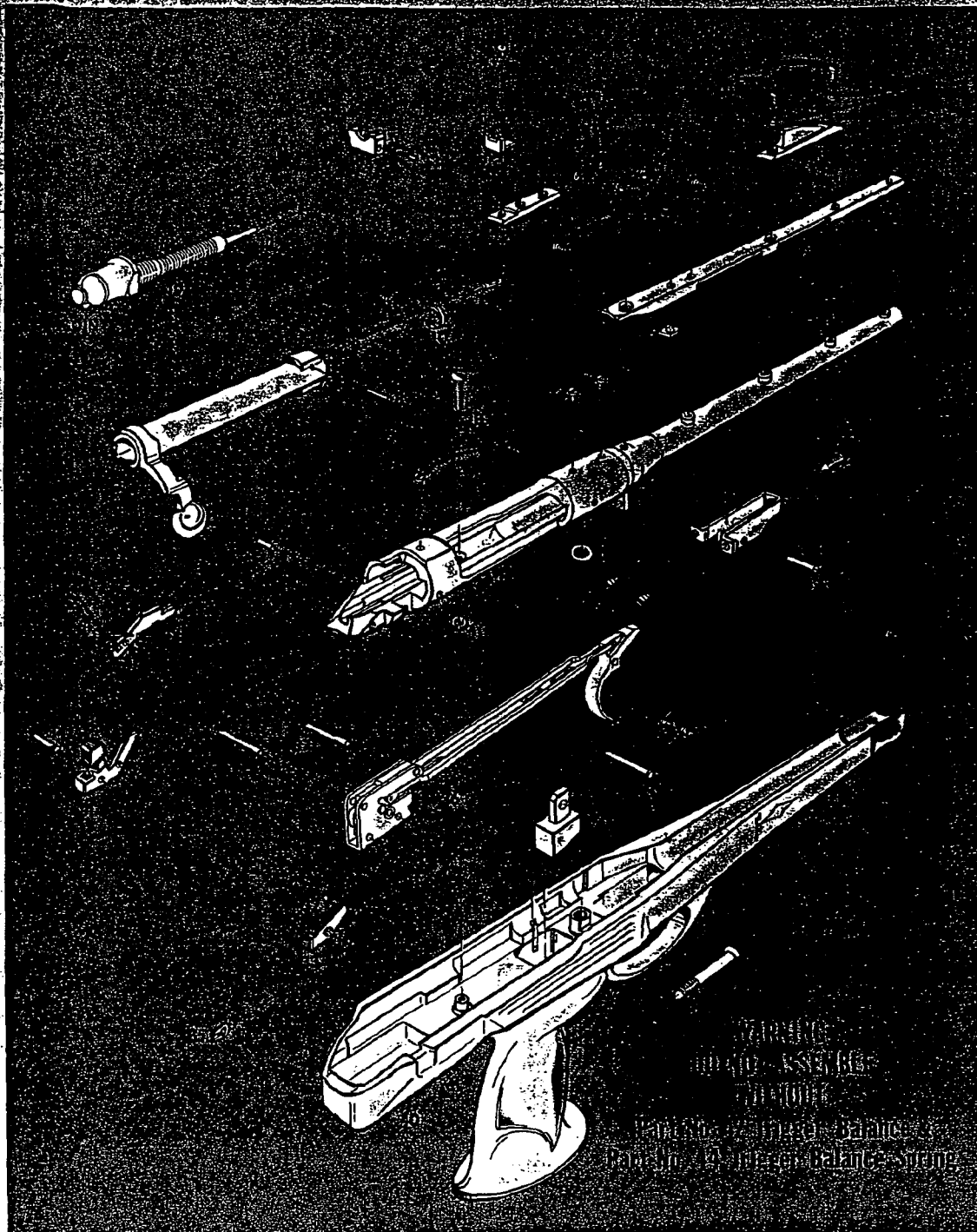


Fig. 5

**IMPORTANT** — Remington firearms are designed, manufactured and proof tested to standards based on factory loaded ammunition. Improperly loaded handloads can be dangerous. Remington Arms Company, Inc. cannot assume responsibility for damages or injury caused by handloads or reloaded ammunition.



MODEL XP-100  
BOLT ACTION PISTOL



Send all guns for factory service and inquiries on  
service and parts to  
**REMINGTON ARMS COMPANY, INC.**  
Arms Service Division  
Ilion, New York 13357

All other inquiries are to be addressed to  
**REMINGTON ARMS COMPANY, INC.**  
Bridgeport, Connecticut 06602

## PARTS LIST

MODEL XP-100  
BOLT ACTION PISTOL

221 REM-

NOTE: SEE INSTRUCTIONS FOR ORDERING PARTS.

View No.	Part No.	NAME OF PART	Unit Price	View No.	Part No.	NAME OF PART	Unit Price
1		Barrel Assembly, 22 Rem. Fireball (Restricted)		41	15470	Trigger Spring	1.00
2		Bolt Assembly, 22 Rem. Fireball (Restricted)		42	15471	Trigger Spring Pin	.75
		Bolt Head Assembly, 22 Rem. Fireball (Restricted)		43	15472	Trigger Spring Spring	.75
3	15676	Bolt Plug	\$ 3.85	44	15473	Trigger Spring Pin	4.45
4	15446	Bolt Stop	1.05	45	15469	Trigger Spring Screw Front	.50
5	24484	Bolt Stop Pin	.40	46	15474	Trigger Spring Screw Washer	.40
6	15413	Bolt Stop Spring	.50	47	24483	Trigger Pin	.40
7	17017	Ejector	1.50	SUPERSEDED IN SERVICE PARTS			
8	17019	Ejector Spring	.40				
9	17676	Ejector Pin	.40				
10	15850	Extractor	2.35				
11	27342	Extractor Rivet	.50	3089	Carrying Case	\$ 12.85	
12		Firing Pin (Restricted)		20467	Extractor	3.85	
13	28600	Firing Pin Assembly	13.85	15448	Forward Receiver Screw & Catcher	1.75	
15		Firing Pin Head (Restricted)		15451	Rear Receiver Screw & Catcher	1.20	
16	15447	Forward Receiver Screw	1.00				
17	15485	Forward Receiver Screw Washer	.40				
18	15449	Front Sight	1.95				
19	15411	Main Spring	.70				
20	15450	Rear Receiver Screw	.60				
21	15484	Rear Receiver Screw Washer	.40				
22	26840	Rear Sight Assembly	5.95				
23	15727	Rear Sight Base	1.00				
24	15733	Rear Sight Elevation Screw	.60				
25	15725	Rear Sight Eyepiece	2.80				
26	15728	Rear Sight Leaf	.75				
27	15418	Rear Sight Nut	.50				
28	15732	Rear Sight Windage Screw	.60				
29	15778	Rear Sight Wrench (not shown)	.40				
30	17034	Receiver Plug Screw	.40				
31	26785	Rib	2.45				
32	15417	Rib Screw	.40				
33	91496	Safety Assembly	2.60				
34	26850	Safety Detent Ball	.40				
35	15432	Safety Detent Spring	.70				
36	17043	Safety Pivot Pin	.50				
37	17044	Safety Snap Washer	.40				
38	26790	Sear Housing Assembly					
39	24476	Sear Pin	.40				
40	15416	Sight Screw	.40				
	16968	Sight Washer	.40				
	26805	Stock Assembly	21.70				

DELIVERIES ARE F.O.B. ILION, N. Y.

PARTS AND PRICES SUBJECT TO CHANGE WITHOUT NOTICE