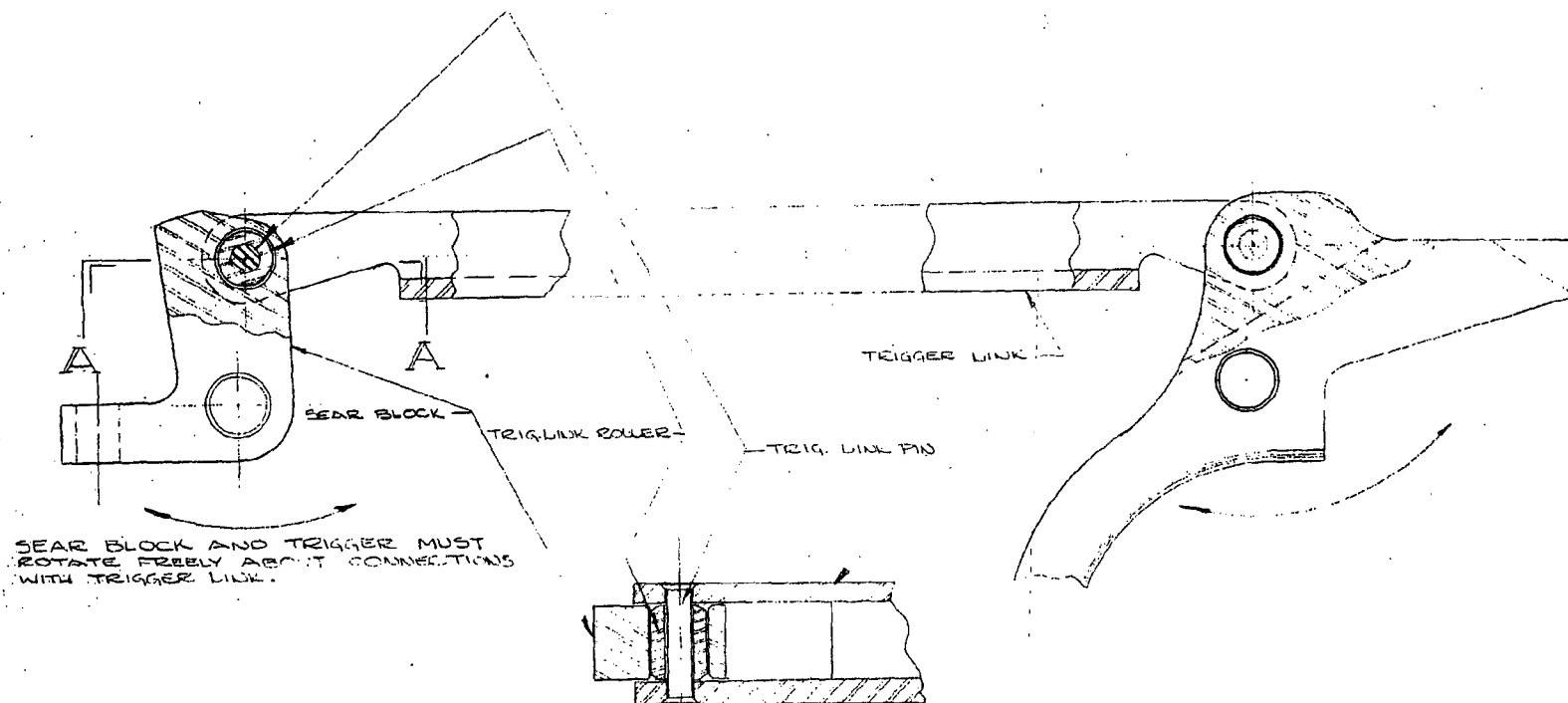


DO NOT SCALE THIS DRAWING. WORK TO FIGURES
UNLESS OTHERWISE NOTED. TOLERANCES
ON DECIMAL DIMENSIONS ARE $\pm .005$
& ON FRACTIONAL DIMENSIONS $\pm \frac{1}{64}$
& ON ANGULAR DIMENSIONS $\pm 00^{\circ}30'$
FINISHES ARE DESIGNATED BY ROOT MEAN
SQUARE (R.M.S.) MICRO-INCH ROUGHNESS
VALUES AND ARE THE MAXIMUM ROUGH-
NESS ACCEPTABLE UNLESS OTHERWISE
SPECIFIED. FINISH ROUGHNESS TO BE
 $\frac{125}{125}$ OR BETTER.

ALTERATIONS

LET	WAS	REFERENCE	BY	DATE



SECTION A-A
TYPICAL BOTH ENDS

XF700 TRIGGER LINK ASSEMBLY			
MODEL	PART USE	QUAN.	REV.
DES'D BY DATE	DRAWN BY DATE	CHECK BY DATE	APPR. BY DATE
2-19-62			
TITLE TRIG. LINK ASSEMBLY			
NUMBER L-1318	SCALE 4X	SUPERSEDES-REFERENCE	
REMINGTON ARMS CO. INC. RESEARCH & DEV. DEPT.			

TPB4 REV. 8

