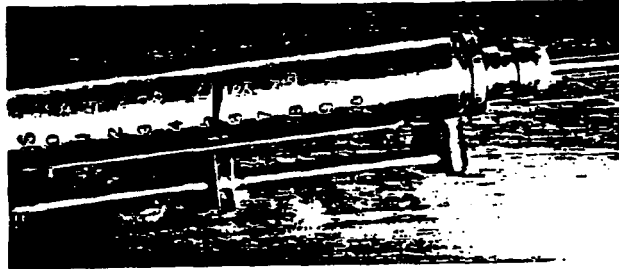
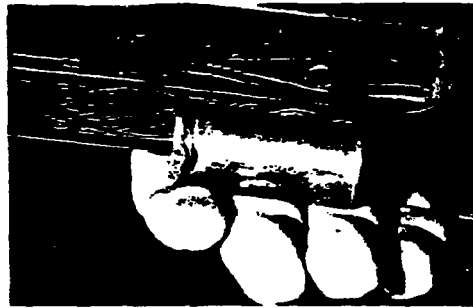


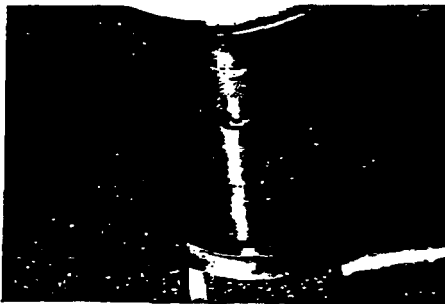
B. (CON'T)

Fig. No. 12

- I2. After you have recorded the trigger pull, open the action and remove the crusher holder. Do this by tipping the gun rearward, while holding the gun on its side with the port facing the palm of your hand. (Fig.#13) Sometimes the copper crusher falls out of the holder during this process. If this happens, shake the gun on its side until the crusher falls out of the port.

Fig. No. 13

- I3. Place the copper crusher (deburred end down), onto the platform of the dial indicator. Lower the stylus into the firing pin indent. Gently move the crusher around until the stylus point locates the deepest point of the indent. The deepest point of the indent is the highest number that ~~the stylus point locates~~. (Figs. #14 & 15)

Fig. No. 14Fig. No. 15