

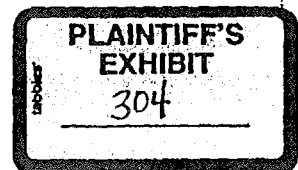
7/96 Estimation

6BFC

- The 6BFC is a six bar linkage configured to operate as a retrofitable fire control for the model 700 Remington bolt action rifle.
- Figure 1 displays the 6BFC as it would be in a model 700.
- The 6BFC consists of six links: the left trigger plate, sear, sear-green-bar connector, green-bar, green-bar-trigger connector, and the trigger.
- The sear-green-bar connector is the most important link of the mechanism.
- The sear-green-bar connector works as a toggle. When the connector is in the position shown in Figure 2, it is between .055 inches and .075 inches past true toggle. When the fire arm is cocked, this position creates a moment about the green-bar which seats the trigger against the green-bar.
- Figure 3 shows the 6BFC in the true toggle position. Notice the toggle position is not obtained when the sear-green-bar connector is in the vertical position, but rather when it is rotated 2.87 degrees past vertical. If one disregards the effects of the reset spring, this is when the sum of the moments about the green-bar become zero.
- The reset spring is used to induce the effect of regain into the system when the 6BFC is in the toggle position.
- The odd shape of the sear-green-bar connector and the green-bar-trigger connector is due to balancing of the 6BFC as a mechanism. No one piece is balanced about its pivot point. The center of masses of the links are arranged such that moments of inertia cancel each other out when excited from any direction (jar off or slam tests). Balancing of the mechanism was obtained through the Lowen and Berkof method.
- When the 6BFC is in the fired position, Figure 4, the reset spring resets the fire control when the bolt is opened. By applying a force between the sear and green-bar trigger-connector, the sear is lifted while the trigger is reset.
- The purpose of the green-bar in the 6BFC is mechanical advantage and locking the trigger when the fire control is in the cocked position. The mechanical advantage comes from the force with respect to displacement as an input, on the green-bar, has been optimized with respect to the force with respect to displacement as an output. An effective force of 3 pounds and .04 inch radial displacement of the top connector pin joint of the green-bar produces an effective 1.7 pound force and .3 inch radial displacement of the bottom pin joint. The locking of the trigger is obtained by the mating surfaces between the green-bar and the trigger.

Confidential - Subject
to Protective Order
Williams v. Remington

IL5619



- Incorporated into the green-bar trigger lockup system is an inertial loop which is used to negate any effect slamming of the bolt may have on the system. When the bolt is slammed, the downward force applied to the sear-green-bar connector is greatly magnified. This induces a counter clock wise moment about the green bar, raising the contact force between green-bar and the trigger. This would normally lead to the green-bar rebounding off the trigger interface, and potentially firing the mechanism. Due to the nature of the interface between the green-bar and the trigger, a counter clock wise moment is applied to the trigger by the slam. A resulting force is then applied along the green-bar-trigger connector which counter acts the rebounding force induced by the bolt slam. This inertial loop effectively dampens any shock induced in the system by slamming the bolt.
- The effective mechanical advantage of the 6BFC as a whole is a 3 pound force producing .02 inch displacement of the trigger to overcome the 23 pound force of the firing pin head with a .1 inch radial drop in the sear at the sear-firing pin head interface (the fire arm is discharged with a three pound trigger pull).

IL5620

Confidential - Subject
to Protective Order
Williams v. Remington

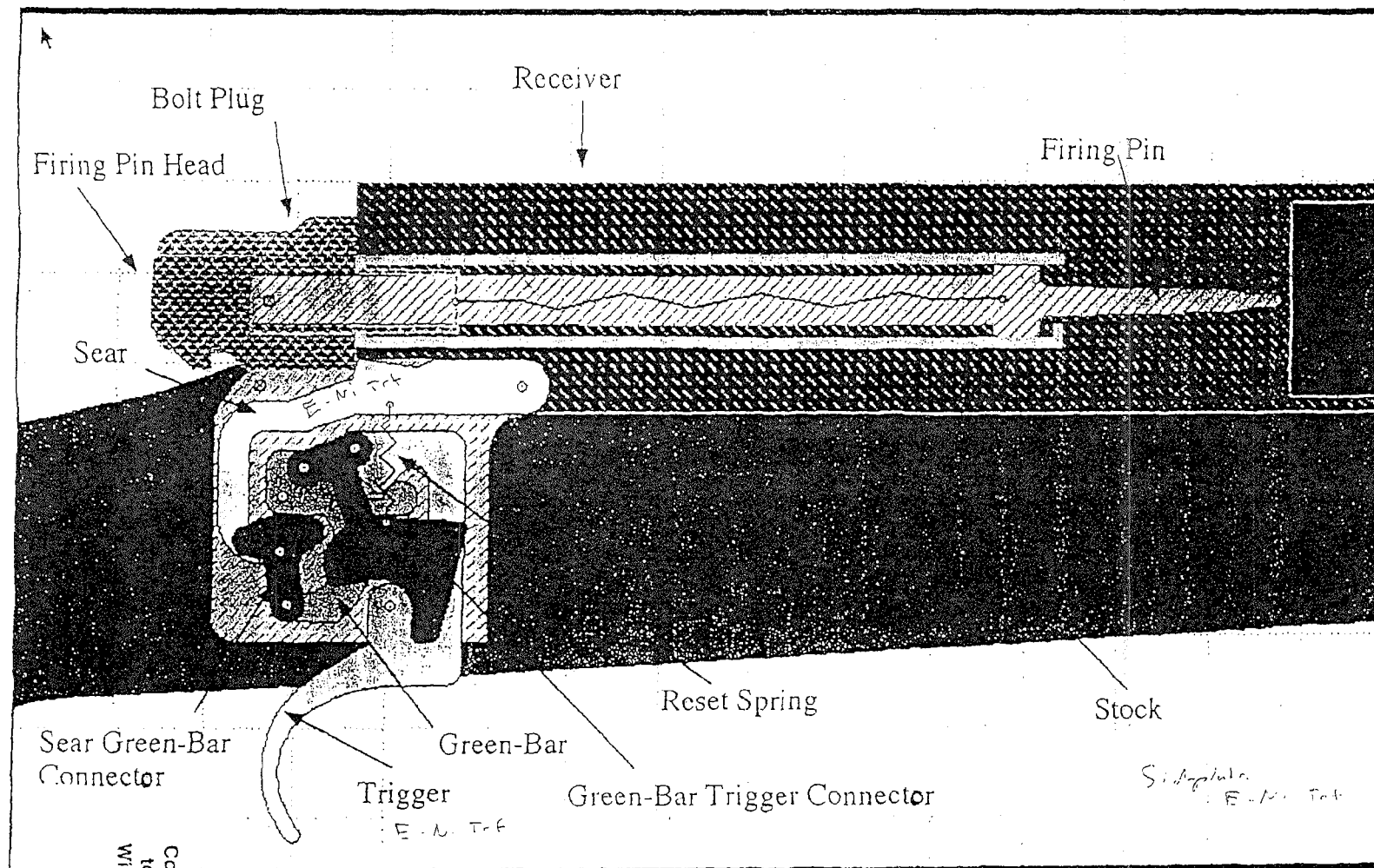


Figure 1. The 6BFC in a M700

Confidential - Subject
to Protective Order
Williams v. Remington

IL5621

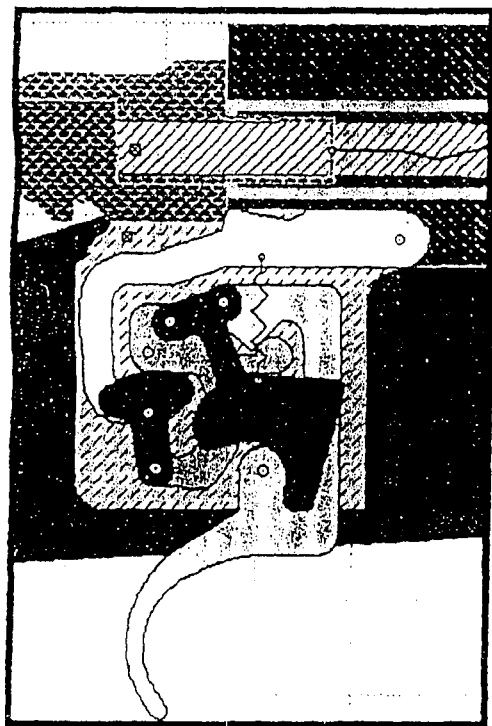


Figure 2. 6BFC Unfired

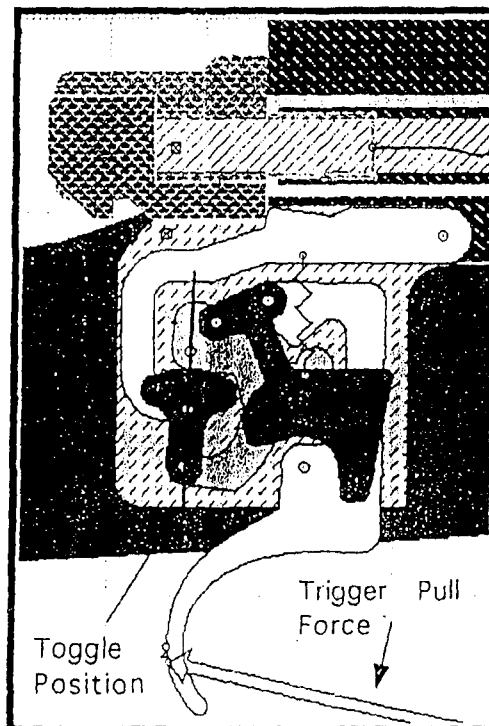


Figure 3. 6BFC in the Toggle Position

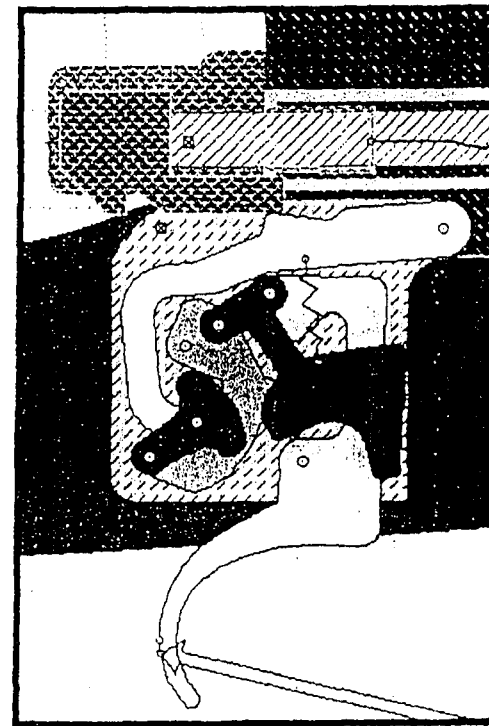


Figure 4. 6BFC in the Fired Position

Confidential - Subject
to Protective Order
Williams v. Remington

IL5622

C-EXP3584



ISO VIEW
SCALE 2:1

THIS DRAWING OR INFORMATION IS
PROPRIETARY INFORMATION TO THE
REMINGTON ARMS COMPANY, INC.

DO NOT SCALE THIS DRAWING. DIMENSIONS ARE IN
INCHES UNLESS OTHERWISE SPECIFIED.
TOLERANCES ON DECIMAL DIMENSIONS ARE:
1 PLACE DEC. - TOLERANCE ±.005
2 PLACE DEC. - TOLERANCE ±.002
3 PLACE DEC. - TOLERANCE ±.001
4 PLACE DEC. - TOLERANCE ±.0005
FRACTIONS - TOLERANCE ±.001
FRACTIONS OVER 1/8 - TOLERANCE ±.001
FRACTIONS UNDER 1/8 - TOLERANCE ±.0005
FRACTIONS UNDER 1/16 - TOLERANCE ±.0002
FRACTIONS UNDER 1/32 - TOLERANCE ±.0001
FRACTIONS UNDER 1/64 - TOLERANCE ±.00005
FRACTIONS UNDER 1/128 - TOLERANCE ±.00002
FRACTIONS UNDER 1/256 - TOLERANCE ±.00001
FRACTIONS UNDER 1/512 - TOLERANCE ±.000005
FRACTIONS UNDER 1/1024 - TOLERANCE ±.000002
FRACTIONS UNDER 1/2048 - TOLERANCE ±.000001
FRACTIONS UNDER 1/4096 - TOLERANCE ±.0000005
FRACTIONS UNDER 1/8192 - TOLERANCE ±.0000002
FRACTIONS UNDER 1/16384 - TOLERANCE ±.0000001
FRACTIONS UNDER 1/32768 - TOLERANCE ±.00000005
FRACTIONS UNDER 1/65536 - TOLERANCE ±.00000002
FRACTIONS UNDER 1/131072 - TOLERANCE ±.00000001
FRACTIONS UNDER 1/262144 - TOLERANCE ±.000000005
FRACTIONS UNDER 1/524288 - TOLERANCE ±.000000002
FRACTIONS UNDER 1/1048576 - TOLERANCE ±.000000001
FRACTIONS UNDER 1/2097152 - TOLERANCE ±.0000000005
FRACTIONS UNDER 1/4194304 - TOLERANCE ±.0000000002
FRACTIONS UNDER 1/8388608 - TOLERANCE ±.0000000001
FRACTIONS UNDER 1/16777216 - TOLERANCE ±.00000000005
FRACTIONS UNDER 1/33554432 - TOLERANCE ±.00000000002
FRACTIONS UNDER 1/67108864 - TOLERANCE ±.00000000001
FRACTIONS UNDER 1/134217728 - TOLERANCE ±.000000000005
FRACTIONS UNDER 1/268435456 - TOLERANCE ±.000000000002
FRACTIONS UNDER 1/536870912 - TOLERANCE ±.000000000001
FRACTIONS UNDER 1/1073741824 - TOLERANCE ±.0000000000005
FRACTIONS UNDER 1/2147483648 - TOLERANCE ±.0000000000002
FRACTIONS UNDER 1/4294967296 - TOLERANCE ±.0000000000001
FRACTIONS UNDER 1/8589934592 - TOLERANCE ±.00000000000005
FRACTIONS UNDER 1/17179869184 - TOLERANCE ±.00000000000002
FRACTIONS UNDER 1/34359738368 - TOLERANCE ±.00000000000001
FRACTIONS UNDER 1/68719476736 - TOLERANCE ±.000000000000005
FRACTIONS UNDER 1/137438953472 - TOLERANCE ±.000000000000002
FRACTIONS UNDER 1/274877906944 - TOLERANCE ±.000000000000001
FRACTIONS UNDER 1/549755813888 - TOLERANCE ±.0000000000000005
FRACTIONS UNDER 1/1099511627776 - TOLERANCE ±.0000000000000002
FRACTIONS UNDER 1/2199023255552 - TOLERANCE ±.0000000000000001
FRACTIONS UNDER 1/4398046511104 - TOLERANCE ±.00000000000000005
FRACTIONS UNDER 1/8796093022208 - TOLERANCE ±.00000000000000002
FRACTIONS UNDER 1/17592186044416 - TOLERANCE ±.00000000000000001
FRACTIONS UNDER 1/35184372088832 - TOLERANCE ±.000000000000000005
FRACTIONS UNDER 1/70368744177664 - TOLERANCE ±.000000000000000002
FRACTIONS UNDER 1/140737488355328 - TOLERANCE ±.000000000000000001
FRACTIONS UNDER 1/281474976710656 - TOLERANCE ±.0000000000000000005
FRACTIONS UNDER 1/562949953421312 - TOLERANCE ±.0000000000000000002
FRACTIONS UNDER 1/1125899906842624 - TOLERANCE ±.0000000000000000001
FRACTIONS UNDER 1/2251799813685248 - TOLERANCE ±.00000000000000000005
FRACTIONS UNDER 1/4503599627370496 - TOLERANCE ±.00000000000000000002
FRACTIONS UNDER 1/9007199254740992 - TOLERANCE ±.00000000000000000001
FRACTIONS UNDER 1/18014398509481984 - TOLERANCE ±.000000000000000000005
FRACTIONS UNDER 1/36028797018963968 - TOLERANCE ±.000000000000000000002
FRACTIONS UNDER 1/72057594037927936 - TOLERANCE ±.000000000000000000001
FRACTIONS UNDER 1/144115188075855872 - TOLERANCE ±.0000000000000000000005
FRACTIONS UNDER 1/288230376151711744 - TOLERANCE ±.0000000000000000000002
FRACTIONS UNDER 1/576460752303423488 - TOLERANCE ±.0000000000000000000001
FRACTIONS UNDER 1/1152921504606846976 - TOLERANCE ±.00000000000000000000005
FRACTIONS UNDER 1/2305843009213693952 - TOLERANCE ±.00000000000000000000002
FRACTIONS UNDER 1/4611686018427387904 - TOLERANCE ±.00000000000000000000001
FRACTIONS UNDER 1/9223372036854775808 - TOLERANCE ±.000000000000000000000005
FRACTIONS UNDER 1/18446744073709551616 - TOLERANCE ±.000000000000000000000002
FRACTIONS UNDER 1/36893488147419103232 - TOLERANCE ±.000000000000000000000001
FRACTIONS UNDER 1/73786976294838206464 - TOLERANCE ±.0000000000000000000000005
FRACTIONS UNDER 1/147573952589676412928 - TOLERANCE ±.0000000000000000000000002
FRACTIONS UNDER 1/295147905179352825856 - TOLERANCE ±.0000000000000000000000001
FRACTIONS UNDER 1/590295810358705651712 - TOLERANCE ±.00000000000000000000000005
FRACTIONS UNDER 1/1180591620717411303424 - TOLERANCE ±.00000000000000000000000002
FRACTIONS UNDER 1/2361183241434822606848 - TOLERANCE ±.00000000000000000000000001
FRACTIONS UNDER 1/4722366482869645213696 - TOLERANCE ±.000000000000000000000000005
FRACTIONS UNDER 1/9444732965739290427392 - TOLERANCE ±.000000000000000000000000002
FRACTIONS UNDER 1/18889465931478580854784 - TOLERANCE ±.000000000000000000000000001
FRACTIONS UNDER 1/37778931862957161709568 - TOLERANCE ±.0000000000000000000000000005
FRACTIONS UNDER 1/75557863725914323419136 - TOLERANCE ±.0000000000000000000000000002
FRACTIONS UNDER 1/151115727451828646838272 - TOLERANCE ±.0000000000000000000000000001
FRACTIONS UNDER 1/302231454903657293676544 - TOLERANCE ±.00000000000000000000000000005
FRACTIONS UNDER 1/604462909807314587353088 - TOLERANCE ±.00000000000000000000000000002
FRACTIONS UNDER 1/1208925819614629174706176 - TOLERANCE ±.00000000000000000000000000001
FRACTIONS UNDER 1/2417851639229258349412352 - TOLERANCE ±.000000000000000000000000000005
FRACTIONS UNDER 1/4835703278458516698824704 - TOLERANCE ±.000000000000000000000000000002
FRACTIONS UNDER 1/9671406556917033397649408 - TOLERANCE ±.000000000000000000000000000001
FRACTIONS UNDER 1/19342813113834066795298816 - TOLERANCE ±.0000000000000000000000000000005
FRACTIONS UNDER 1/38685626227668133590597632 - TOLERANCE ±.0000000000000000000000000000002
FRACTIONS UNDER 1/77371252455336267181195264 - TOLERANCE ±.0000000000000000000000000000001
FRACTIONS UNDER 1/154742504910672534362390528 - TOLERANCE ±.00000000000000000000000000000005
FRACTIONS UNDER 1/309485009821345068724781056 - TOLERANCE ±.00000000000000000000000000000002
FRACTIONS UNDER 1/618970019642690137449562112 - TOLERANCE ±.00000000000000000000000000000001
FRACTIONS UNDER 1/1237940039285380274899124224 - TOLERANCE ±.000000000000000000000000000000005
FRACTIONS UNDER 1/2475880078570760549798248448 - TOLERANCE ±.000000000000000000000000000000002
FRACTIONS UNDER 1/4951760157141521099596496896 - TOLERANCE ±.000000000000000000000000000000001
FRACTIONS UNDER 1/9903520314283042199192993792 - TOLERANCE ±.0000000000000000000000000000000005
FRACTIONS UNDER 1/19807040628566084398385987584 - TOLERANCE ±.0000000000000000000000000000000002
FRACTIONS UNDER 1/39614081257132168796771975168 - TOLERANCE ±.0000000000000000000000000000000001
FRACTIONS UNDER 1/79228162514264337593543950336 - TOLERANCE ±.00000000000000000000000000000000005
FRACTIONS UNDER 1/158456325028528675187087900672 - TOLERANCE ±.00000000000000000000000000000000002
FRACTIONS UNDER 1/316912650057057350374175801344 - TOLERANCE ±.00000000000000000000000000000000001
FRACTIONS UNDER 1/633825300114114700748351602688 - TOLERANCE ±.000000000000000000000000000000000005
FRACTIONS UNDER 1/1267650600228229401496703205376 - TOLERANCE ±.000000000000000000000000000000000002
FRACTIONS UNDER 1/2535301200456458802993406410752 - TOLERANCE ±.000000000000000000000000000000000001
FRACTIONS UNDER 1/5070602400912917605986812821504 - TOLERANCE ±.0000000000000000000000000000000000005
FRACTIONS UNDER 1/10141204801825835211973625643008 - TOLERANCE ±.0000000000000000000000000000000000002
FRACTIONS UNDER 1/20282409603651670423947251286016 - TOLERANCE ±.0000000000000000000000000000000000001
FRACTIONS UNDER 1/40564819207303340847894502572032 - TOLERANCE ±.00000000000000000000000000000000000005
FRACTIONS UNDER 1/81129638414606681695789005144064 - TOLERANCE ±.00000000000000000000000000000000000002
FRACTIONS UNDER 1/162259276829213363391778010288128 - TOLERANCE ±.00000000000000000000000000000000000001
FRACTIONS UNDER 1/324518553658426726783556020576256 - TOLERANCE ±.000000000000000000000000000000000000005
FRACTIONS UNDER 1/649037107316853453567112041152512 - TOLERANCE ±.000000000000000000000000000000000000002
FRACTIONS UNDER 1/1298074214633706907134224082305024 - TOLERANCE ±.000000000000000000000000000000000000001
FRACTIONS UNDER 1/2596148429267413814268448164610048 - TOLERANCE ±.0000000000000000000000000000000000000005
FRACTIONS UNDER 1/5192296858534827628536896329220096 - TOLERANCE ±.0000000000000000000000000000000000000002
FRACTIONS UNDER 1/10384593717069655257073792658440192 - TOLERANCE ±.0000000000000000000000000000000000000001
FRACTIONS UNDER 1/20769187434139310514147585316880384 - TOLERANCE ±.005
FRACTIONS UNDER 1/41538374868278621028295170633760768 - TOLERANCE ±.002
FRACTIONS UNDER 1/83076749736557242056590341267521536 - TOLERANCE ±.001
FRACTIONS UNDER 1/166153499473114484113180682535043072 - TOLERANCE ±.0005
FRACTIONS UNDER 1/332306998946228968226361365070086144 - TOLERANCE ±.0002
FRACTIONS UNDER 1/664613997892457936452722730140172288 - TOLERANCE ±.0001
FRACTIONS UNDER 1/1329227995784915872905445460280344576 - TOLERANCE ±.005
FRACTIONS UNDER 1/2658455991569831745810890920560689152 - TOLERANCE ±.002
FRACTIONS UNDER 1/5316911983139663491621781841121378304 - TOLERANCE ±.001
FRACTIONS UNDER 1/10633823966279326983243563682242756608 - TOLERANCE ±.0005
FRACTIONS UNDER 1/21267647932558653966487127364485513216 - TOLERANCE ±.0002
FRACTIONS UNDER 1/42535295865117307932974254728971026432 - TOLERANCE ±.0001
FRACTIONS UNDER 1/85070591730234615865948509457942052864 - TOLERANCE ±.005
FRACTIONS UNDER 1/170141183460469231731897018915884105728 - TOLERANCE ±.002
FRACTIONS UNDER 1/340282366920938463463794037831768211456 - TOLERANCE ±.001
FRACTIONS UNDER 1/680564733841876926927588075663536422912 - TOLERANCE ±.0005
FRACTIONS UNDER 1/1361129467683753853855176151327072845824 - TOLERANCE ±.0002
FRACTIONS UNDER 1/2722258935367507707710352302654145691648 - TOLERANCE ±.0001
FRACTIONS UNDER 1/5444517870735015415420704605308291383296 - TOLERANCE ±.005
FRACTIONS UNDER 1/10889035741470030830841409210616582766592 - TOLERANCE ±.002
FRACTIONS UNDER 1/21778071482940061661682818421233165533184 - TOLERANCE ±.001
FRACTIONS UNDER 1/43556142965880123323365636842466331066368 - TOLERANCE ±.0005
FRACTIONS UNDER 1/87112285931760246646731273684932662132736 - TOLERANCE ±.0002
FRACTIONS UNDER 1/174224571863520493293462547369853324265472 - TOLERANCE ±.0001
FRACTIONS UNDER 1/348449143727040986586925094739706648530944 - TOLERANCE ±.005
FRACTIONS UNDER 1/696898287454081973173850189479413297061888 - TOLERANCE ±.002
FRACTIONS UNDER 1/1393796574908163946347700378958826594123776 - TOLERANCE ±.001
FRACTIONS UNDER 1/2787593149816327892695400757917653188247552 - TOLERANCE ±.0005
FRACTIONS UNDER 1/5575186299632655785390801515835306376495104 - TOLERANCE ±.0002
FRACTIONS UNDER 1/11150372599265311570781603031670612752990208 - TOLERANCE ±.0001
FRACTIONS UNDER 1/22300745198530623141563206063341225505980416 - TOLERANCE ±.005
FRACTIONS UNDER 1/44601490397061246283126412126682451011960832 - TOLERANCE ±.002
FRACTIONS UNDER 1/89202980794122492566252824253364902023921664 - TOLERANCE ±.001
FRACTIONS UNDER 1/1784059615882449851325056485067298040478432 - TOLERANCE ±.0005
FRACTIONS UNDER 1/3568119231764899702650112970134596080956864 - TOLERANCE ±.0002
FRACTIONS UNDER 1/7136238463529799405300225940269192161913728 - TOLERANCE ±.0001
FRACTIONS UNDER 1/14272476927059598810600451880538384323827456 - TOLERANCE ±.005
FRACTIONS UNDER 1/28544953854119197621200903761076768647654912 - TOLERANCE ±.002
FRACTIONS UNDER 1/57089907708238395242401807522153537295309824 - TOLERANCE ±.001
FRACTIONS UNDER 1/114179815416476790484803615044307074590619648 - TOLERANCE ±.0005
FRACTIONS UNDER 1/228359630832953580969607230088614149181239296 - TOLERANCE ±.0002
FRACTIONS UNDER 1/456719261665907161939214460177228298362478592 - TOLERANCE ±.0001
FRACTIONS UNDER 1/913438523331814323878428920354456596724957184 - TOLERANCE ±.005
FRACTIONS UNDER 1/1826877046663628647756857840708913193449914368 - TOLERANCE ±.002
FRACTIONS UNDER 1/3653754093327257295513715681417826386899828736 - TOLERANCE ±.001
FRACTIONS UNDER 1/7307508186654514591027431362835652773799657472 - TOLERANCE ±.0005
FRACTIONS UNDER 1/14615016373309029182054862725671305547599314944 - TOLERANCE ±.0002
FRACTIONS UNDER 1/29230032746618058364109725451342611095198629888 - TOLERANCE ±.0001
FRACTIONS UNDER 1/58460065493236116728219450902685222190397259776 - TOLERANCE ±.005
FRACTIONS UNDER 1/116920130986472233456438901805370444380794519552 - TOLERANCE ±.002
FRACTIONS UNDER 1/233840261972944466912877803610740888761589039104 - TOLERANCE ±.001
FRACTIONS UNDER 1/467680523945888933825755607221481777523178078208 - TOLERANCE ±.0005
FRACTIONS UNDER 1/935361047891777867651511214442963555046356156416 - TOLERANCE ±.0002
FRACTIONS UNDER 1/1870722095783555735303022428885927110092712312832 - TOLERANCE ±.0001
FRACTIONS UNDER 1/3741444191567111470606044857771854220185424625664 - TOLERANCE ±.005
FRACTIONS UNDER 1/7482888383134222941212089715543708440370849251328 - TOLERANCE ±.0

CT FRANK : PARTIAL...-000-2 GREEN AR-TRI-000-CON

Confidential - Subject
to Protective Order
Williams v. Remington

B-EXP3222

THIS DRAWING OR INFORMATION IS
PROPRIETARY INFORMATION TO THE
REMINGTON ARMS COMPANY, INC.

DO NOT SCALE THIS DRAWING; NOTE TO FIGURES
UNLESS OTHERWISE NOTED.
TOLERANCES ON DECIMAL DIMENSIONS ARE:
1 PLACE .100 - TOLERANCE ± .015
2 PLACE .100 - TOLERANCE ± .010
3 PLACE .100 - TOLERANCE ± .005
4 ON FRACTIONAL DIMENSIONS ± 1/64
4 ON ANGULAR DIMENSIONS ± .00° - 30'
FINISHES ARE DESIGNATED BY ROOT VCAN
SQUARE OR V.S.I MICRO-INCH ROUGHNESS
VALUES AND ARE THE MAXIMUM ROUGHNESS
ACCEPTABLE, UNLESS OTHERWISE SPECIFIED.
FINISH ROUGHNESS TO BE $\sqrt{125}$ OR BETTER.

MATERIAL AISI 1010-1020
HEAT TREAT CARBURIZE
HARDNESS HISM88-92
COLOR BLACK OXIDE
HEAT TREAT AND COLOR TO BE DONE BY
REWINCON

.300
.085 TYP.
.100 R TYP.
.080 R TYP.
.085 R TYP.
.168 TYP.
Ø.063
Ø.063
Ø.002 (A B C)
-C-
.505 R
Ø.063
-B-
.080
-A-

ALTERATIONS			
ALT.	DATE	REV.	BY DATE

MODEL	PART NO.	PART USE

DES. BY DATE	DWG. BY DATE	ENGR. BY DATE	APP. BY DATE
CLM 11/03/95	JWS 04/02/95		

TITLE **SEAR GREENBAR CONNECTOR**

NUMBER	SHEET	QUANTITY REQD.	DEPT. OF USE
B-EXP3222	10X		

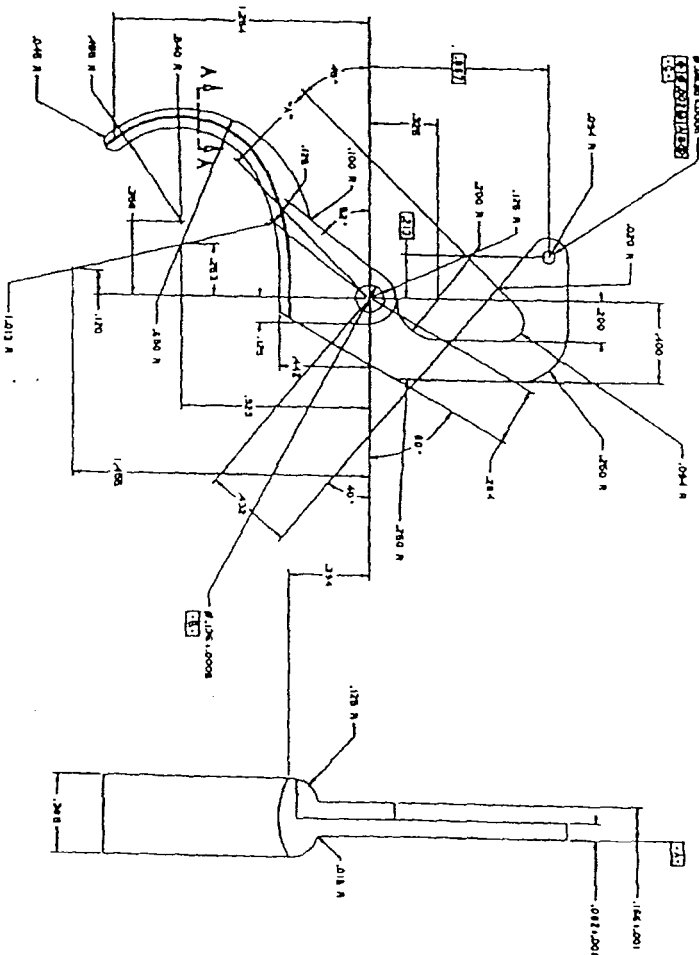
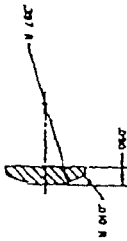
ARMY CO. INC.
OWN RESEARCH DIV.

CY FIVEAVE · P DLW.88FC-2 SEAR-GREENBAR-CON

150 MEV
SCALE 1"

Case No.	Year
01	1990
02	1991
03	1992
04	1993
05	1994
06	1995
07	1996
08	1997
09	1998
10	1999
11	2000
12	2001
13	2002
14	2003
15	2004
16	2005
17	2006
18	2007
19	2008
20	2009
21	2010
22	2011
23	2012
24	2013
25	2014
26	2015
27	2016
28	2017
29	2018
30	2019
31	2020
32	2021
33	2022
34	2023
35	2024
36	2025
37	2026
38	2027
39	2028
40	2029
41	2030
42	2031
43	2032
44	2033
45	2034
46	2035
47	2036
48	2037
49	2038
50	2039
51	2040
52	2041
53	2042
54	2043
55	2044
56	2045
57	2046
58	2047
59	2048
60	2049
61	2050
62	2051
63	2052
64	2053
65	2054
66	2055
67	2056
68	2057
69	2058
70	2059
71	2060
72	2061
73	2062
74	2063
75	2064
76	2065
77	2066
78	2067
79	2068
80	2069
81	2070
82	2071
83	2072
84	2073
85	2074
86	2075
87	2076
88	2077
89	2078
90	2079
91	2080
92	2081
93	2082
94	2083
95	2084
96	2085
97	2086
98	2087
99	2088
100	2089
101	2090
102	2091
103	2092
104	2093
105	2094
106	2095
107	2096
108	2097
109	2098
110	2099
111	2100
112	2101
113	2102
114	2103
115	2104
116	2105
117	2106
118	2107
119	2108
120	2109
121	2110
122	2111
123	2112
124	2113
125	2114
126	2115
127	2116
128	2117
129	2118
130	2119
131	2120
132	2121
133	2122
134	2123
135	2124
136	2125
137	2126
138	2127
139	2128
140	2129
141	2130
142	2131
143	2132
144	2133
145	2134
146	2135
147	2136
148	2137
149	2138
150	2139
151	2140
152	2141
153	2142
154	2143
155	2144
156	2145
157	2146
158	2147
159	2148
160	2149

SECTION A-A



卷之四

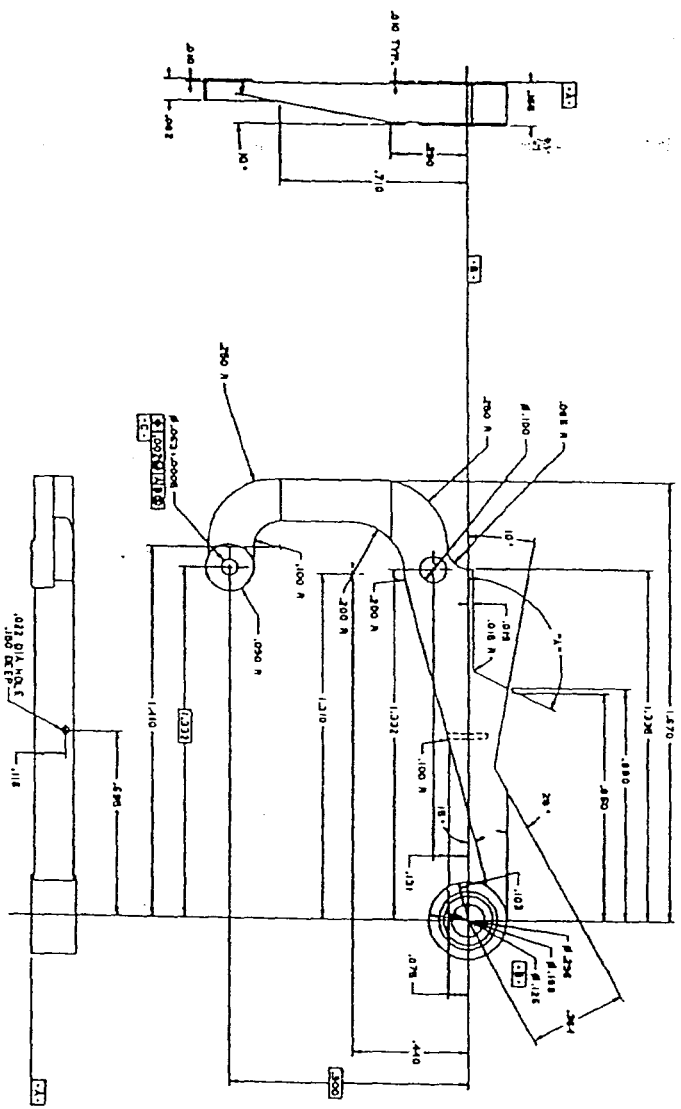


1. The first step is to identify the problem or question that needs to be answered. This involves understanding the context and the specific information required.

IL5626

**Confidential - Subject
to Protective Order
Williams v. Remington**

[illegible][illegible]

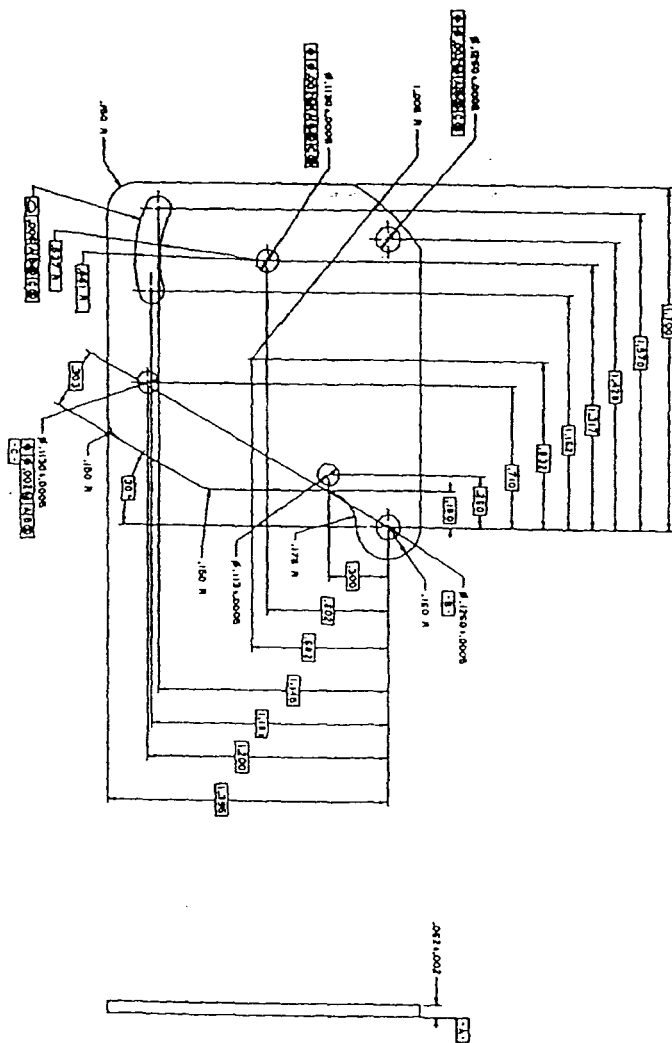
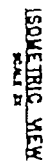
[illegible]

**Confidential - Subject
to Protective Order
Williams v. Remington**

[illegible]

WATSON, JOHN HENRY
BORN JAN 20 1867
DIED FEB 19 1900
AGE 33 YRS
WAS A BROTHER OF
THE LATE JAMES WATSON
OF THE SAME FAMIL

Confidential - Subject
to Protective Order
Williams v. Remington

[illegible]

1	2	3	4	5	6	7	8	9	10	11	12	13	14	15	16	17	18	19	20	21	22	23	24	25	26	27	28	29	30	31	32	33	34	35	36	37	38	39	40	41	42	43	44	45	46	47	48	49	50	51	52	53	54	55	56	57	58	59	60	61	62	63	64	65	66	67	68	69	70	71	72	73	74	75	76	77	78	79	80	81	82	83	84	85	86	87	88	89	90	91	92	93	94	95	96	97	98	99	100
---	---	---	---	---	---	---	---	---	----	----	----	----	----	----	----	----	----	----	----	----	----	----	----	----	----	----	----	----	----	----	----	----	----	----	----	----	----	----	----	----	----	----	----	----	----	----	----	----	----	----	----	----	----	----	----	----	----	----	----	----	----	----	----	----	----	----	----	----	----	----	----	----	----	----	----	----	----	----	----	----	----	----	----	----	----	----	----	----	----	----	----	----	----	----	----	----	----	----	-----

								F
								T
								D
								S
								E